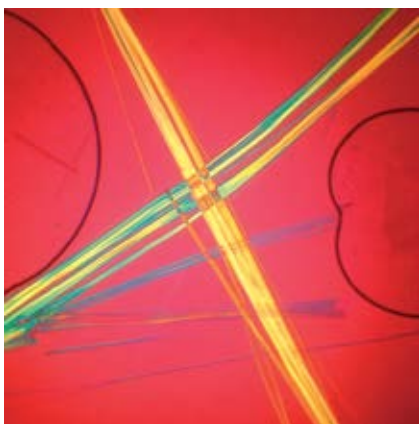


ASBESTOS

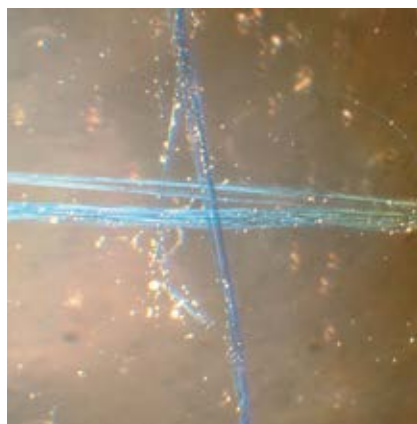
WHAT IS IT?

THERE ARE THREE COMMON ASBESTOS TYPES THAT HAVE BEEN USED IN BUILDINGS.

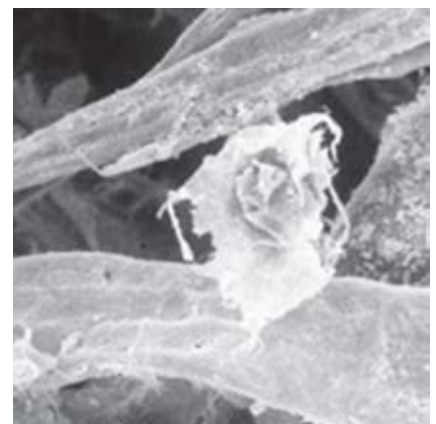
AMOSITE – BROWN ASBESTOS



CROCIDOLITE – BLUE ASBESTOS



CHRYSTOLE – WHITE ASBESTOS



KEY FACTS ABOUT ASBESTOS

- Asbestos is a naturally occurring fibrous mineral that is found in many countries throughout the world.
- Asbestos fibres are very strong and resistant to heat and chemicals.
- There are a number of different types of asbestos, however the commonly occurring ones are white (chrysotile), brown (amosite) and blue (crocidolite).
- It has been estimated that asbestos was used in more than 3,000 commercial products.
- Asbestos was only banned in all its forms in the year 2000.

 +44 (0)1902 791565  SGSDMWSAFETY@SGS.COM  WWW.SGS.CO.UK/EHS

DMW ENVIRONMENTAL SAFETY LTD IS NOW PART OF SGS, THE WORLD'S LEADING INSPECTION, VERIFICATION, TESTING AND CERTIFICATION COMPANY.

ASBESTOS

WHERE CAN IT BE FOUND?

ASBESTOS HAS BEEN USED IN AROUND 3,000 COMMERCIAL BUILDING PRODUCTS.

In the UK, all forms of asbestos were only banned as recently as the year 2000. It is still used in other parts of the world and can be found in many different buildings and structures in this country including:

SPRAYED COATING



PIPE LAGGING



INSULATION BOARD



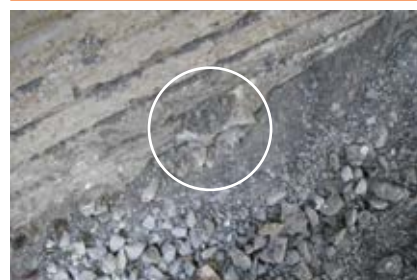
DECORATIVE COATING



CORRUGATED SHEET



ASBESTOS CEMENT



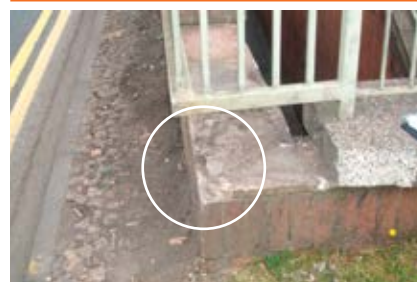
WOVEN FLASHGUARD



BRIDGE EXPANSION JOINTS



UNDER SUBWAY CAPSTONES



+44 (0)1902 791565 SGSDMWSAFETY@SGS.CO.UK WWW.SGS.CO.UK/EHS

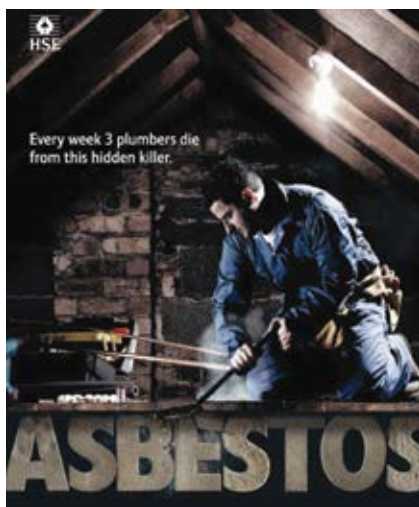
DMW ENVIRONMENTAL SAFETY LTD IS NOW PART OF SGS, THE WORLD'S LEADING INSPECTION, VERIFICATION, TESTING AND CERTIFICATION COMPANY.

ASBESTOS

WHAT ARE THE RISKS?

ASBESTOS IS THE SINGLE BIGGEST OCCUPATIONAL KILLER IN THE UK.

Currently more people in the UK die of asbestos-related diseases than on the roads in car accidents. Brown and blue asbestos are thought to be particularly dangerous but all types of asbestos can kill if the fibres are inhaled.



DISEASES CAUSED BY ASBESTOS INCLUDE:

- Mesothelioma (cancer of the lining to the lung and abdomen).
- Bronchial lung cancer.
- Asbestosis (scarring of the lung).

ASBESTOS – KEY LEGAL REQUIREMENTS

- Key legislation is the Control of Asbestos Regulations 2012.
- Work with asbestos requires a licence from the HSE unless the task is a lower-risk activity.

CONTROLLING ASBESTOS RISKS DURING REFURBISHMENT, MAINTENANCE AND DEMOLITION – KEY REQUIREMENTS

- When assessing asbestos risks, it must be presumed to be present in buildings unless there is strong evidence otherwise.
- Where there is a risk of asbestos being discovered and disturbed during work on buildings, steps should be taken to identify it before starting.
- Managers of premises and employers of people doing work that could disturb asbestos have a legal duty to prevent or reduce people's exposure to it.
- If asbestos is sealed and in good condition and will not be disturbed it can be left in place.
- If asbestos is in poor condition or vulnerable to damage, it should be sealed, protected or safely removed as is appropriate.
- All persons involved in refurbishment, maintenance and demolition work should be trained in asbestos risk awareness.
- If you suspect you have discovered asbestos during work – STOP WORK and seek assistance.



+44 (0)1902 791565 SGSDMWSAFETY@SGS.COM WWW.SGS.CO.UK/EHS

DMW ENVIRONMENTAL SAFETY LTD IS NOW PART OF SGS, THE WORLD'S LEADING INSPECTION, VERIFICATION, TESTING AND CERTIFICATION COMPANY.