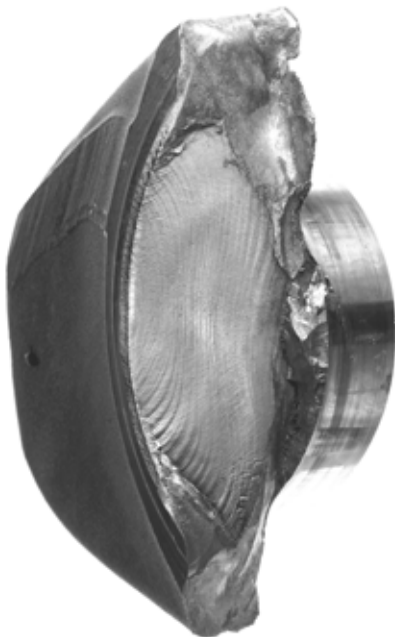


# **FAILURE INVESTIGATIONS**

When engineering components fail in service, a forensic failure investigation is often a prerequisite in an attempt to identify the mechanism of failure and establish root cause.

This is important for several reasons:

- Product improvement and development
- Retaining customer confidence
- Preventing repeat failures
- Financial recompense
- Legal representation
- Resolving health and safety issues



SGS MIS offer a full and flexible service, from the smallest component failure to the largest. Our team of six metallurgists have over 30 years of failure investigation experience in fields as diverse as:

- Aerospace
- Agriculture
- Automotive
- Construction
- Food industry
- Foundry
- Heavy plant
- Oil and gas
- Marine

We can examine components globally in situ, taking samples, photographs, PMI readings and fracture replicas in order to report on failures that cannot be moved from their current location.

Our laboratories provide a comprehensive service, covering all aspects of the investigative process. This includes:

- Metallography
- Fractography
- Image analysis
- Mechanical testing
- Chemical analysis
- SEM analysis



### WHY SGS

SGS is the world's leading inspection, verification, testing and certification company. SGS is recognised as the global benchmark for quality and integrity.

Enhancing processes, systems and skills is fundamental to your ongoing success and sustained growth. We enable you to continuously improve, transforming your services and value chain by increasing performance, managing risks, better meeting stakeholder requirements and managing sustainability.

With a global presence, we have a history of successfully executing large-scale, complex international projects. Our people speak the language and understand the culture of the local market and operate in a consistent, reliable and effective manner.

To learn how SGS can help you exceed customer expectations, visit [www.sgs.co.uk](http://www.sgs.co.uk), [www.mistesting.co.uk](http://www.mistesting.co.uk) or contact [gb.mis.testing@sgs.com](mailto:gb.mis.testing@sgs.com) for more information.

**MIS TESTING LTD IS NOW PART OF SGS, THE WORLD'S LEADING INSPECTION, VERIFICATION, TESTING AND CERTIFICATION COMPANY.**

**WHEN YOU NEED TO BE SURE**

**SGS**